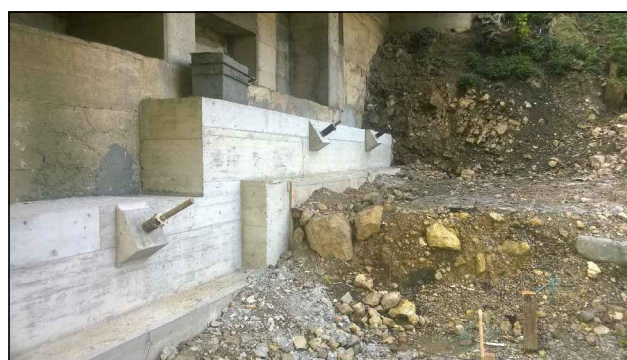




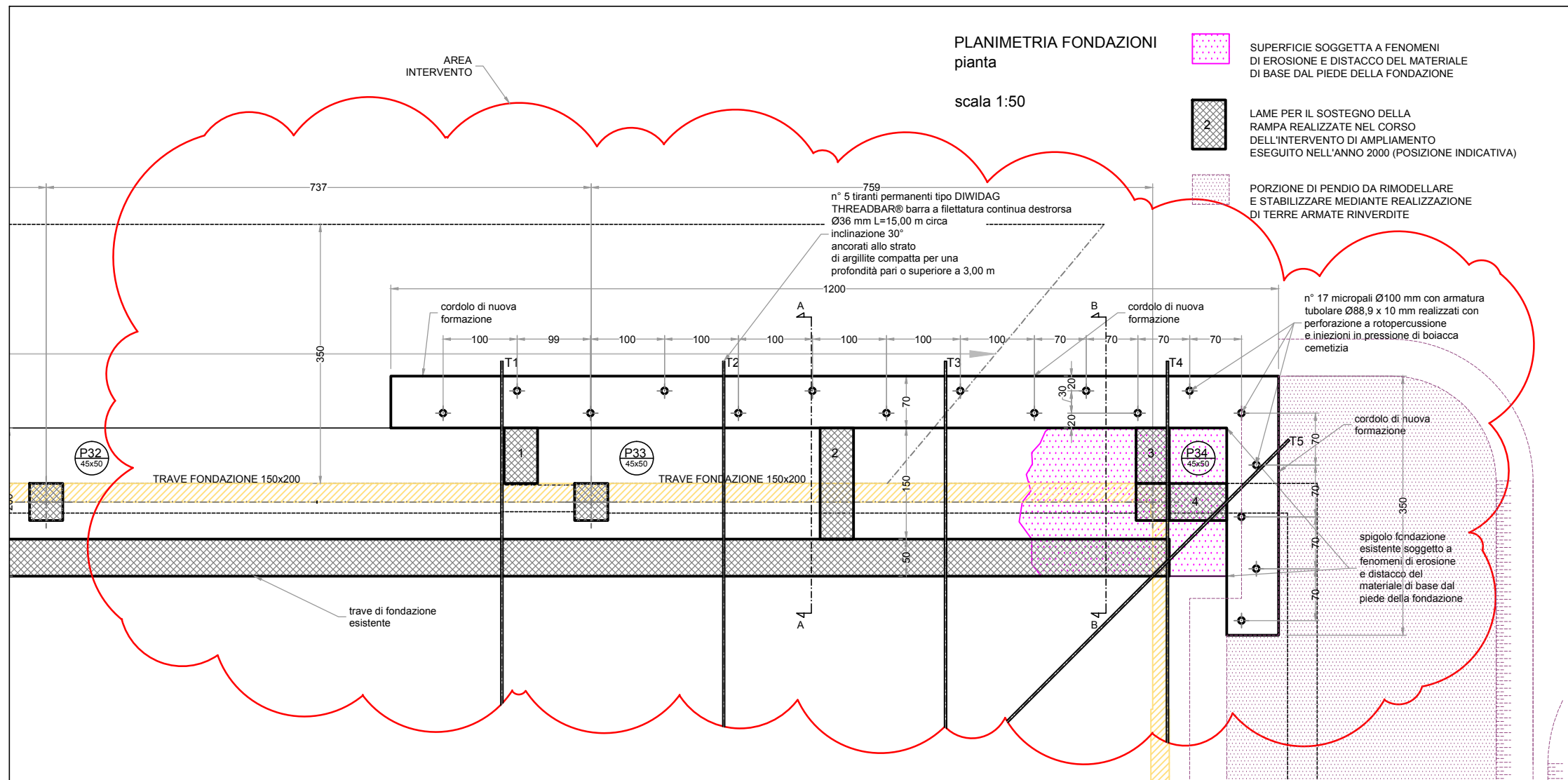
CANTIERE



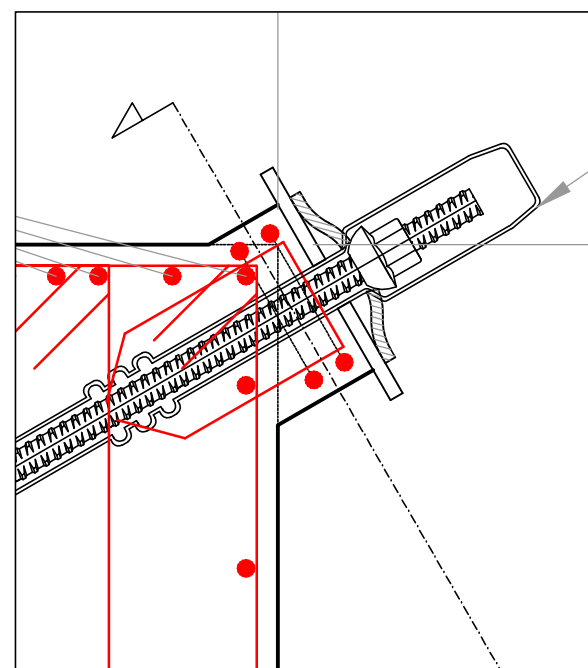
CANTIERE



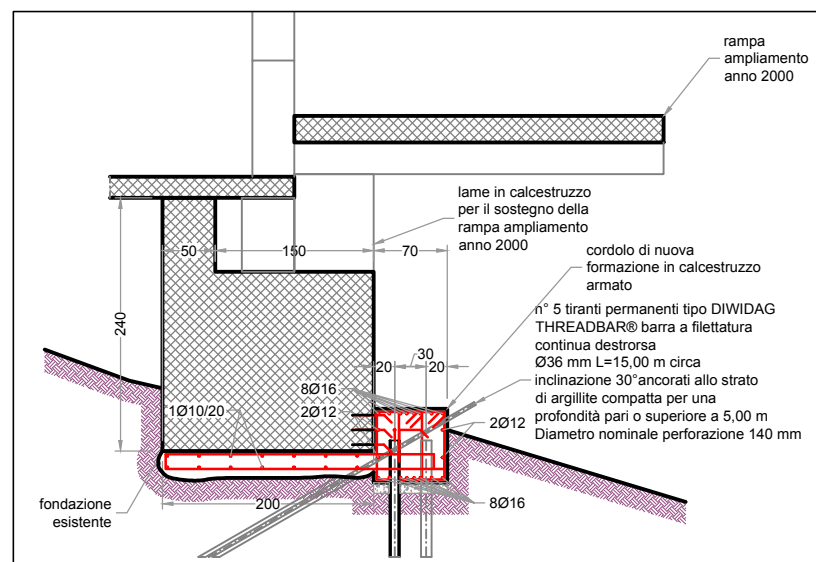
CANTIERE



STRALCIO PLANIMETRIA AREA DI INTERVENTO



DETTAGLIO



DETTAGLIO



CANTIERE



CANTIERE

# INTERVENTO DI CONSOLIDAMENTO STATICO DI PORZIONE DI FONDAZIONE EDIFICIO INDUSTRIALE

BREMBILLA